

Mawr Community Council - Biodiversity

Craig Cefn Parc and Garnswllt

Presentation 13/06/22

Craig Cefn Parc

Progress

- Polytunnel planning approved and skin on
- Unfortunately lots of damage Jubilee weekend, now repaired
- Continued weeding of raised beds
- Planting Peas, broad beans, potatoes, borlotti beans, leeks, parsnips, radish
- Place sheeting to cover grass in polytunnel
- Meeting visit – Swansea RDP 13/05/22
- Meeting Local Area Coordinators 16/05/22
- Started compost
- Grass allowed to naturalise
- Planters weeded and planted
- Volunteers Started

Risks and issues

- Lack of water supply especially when the polytunnel is set up
- Plants and seeds required for polytunnel

Next Steps

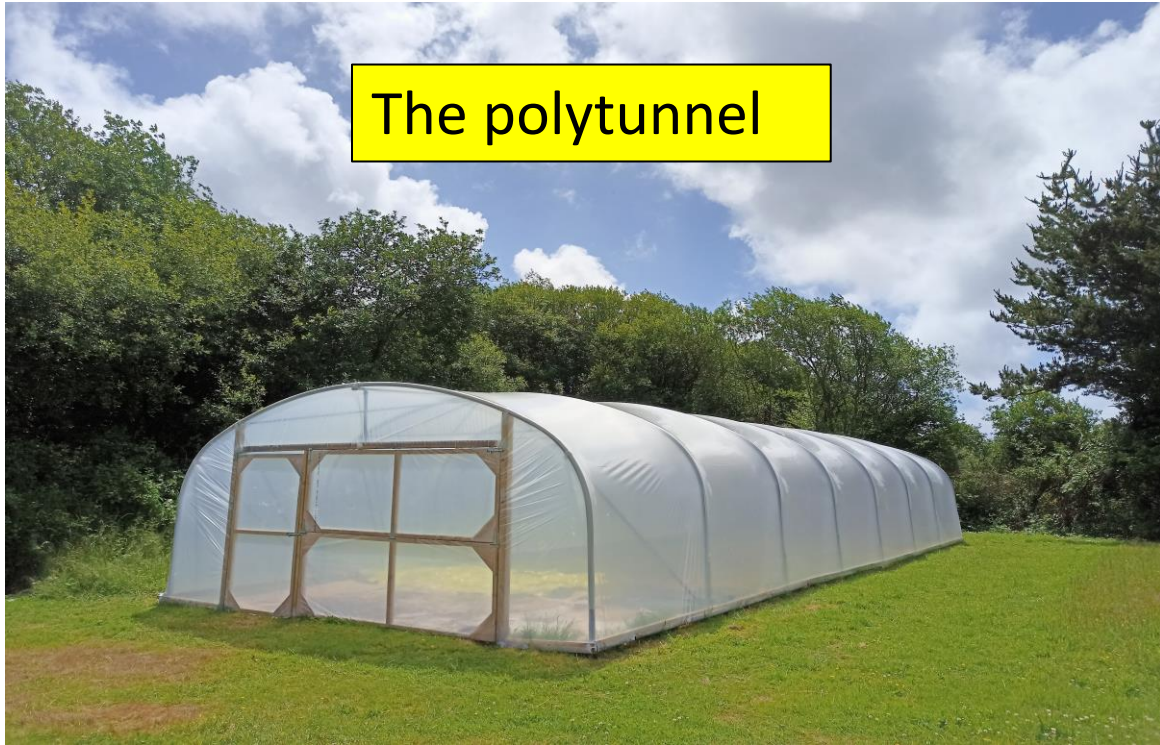
- Collect Cardboard from Gorseinon CIRR. Griffiths 14/06/22
- Cover the grass in the polytunnel cardboard
- Liaise with Welsh Water to get the water supply
- Weed and Lay membrane around beds
- Continue weeding around saplings
- Raise other water tank
- Improve water capture

Support Required

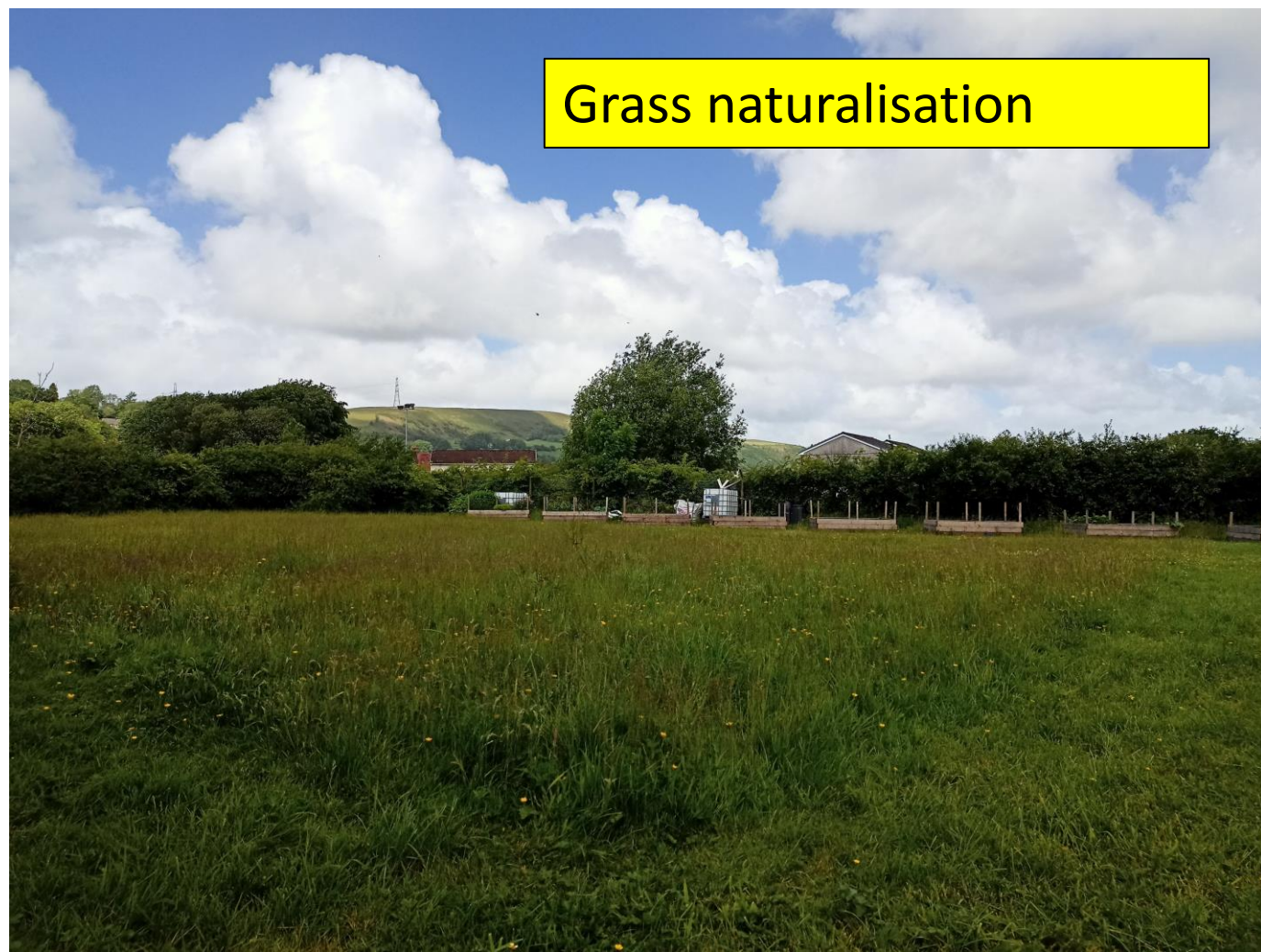
- Water supply – permission / funding
- Compost required for the polytunnel
- More bark chip required for paths
- Funding for small purchases for ongoing development ie. Seeds, fixtures and fittings

Craig Cefn Parc

The polytunnel



Grass naturalisation



Example of damage to the polytunnel, around 25 patches of tape were required to repair



Garnswllt

Progress

- Weeding and soil improvement in raised beds
- Planted Peas, broad beans, Runner Beans, Tomatoes
- Fitted water butt and guttering
- New beds built, dug and planted
- Bushes and trees relocated
- Grass naturalisation
- Benches delivered and located
- Meeting Local Area Coordinators 16/05/22
- Greenhouse damaged and repaired
- Trees pruned after damage

Risks and issues

- Lack of water supply other than water butt
- Benches to be secured
- Damage to trees and roses

Next Steps

- Securing Benches
- Continue planting build further raised bed greenhouse relocate
- Improve water capture
- Benches and tables to be received and fitted
- Raised beds to be fitted in greenhouse
- Liaise with Welsh Water with regards to water supply
- Rubbish to be removed
- Build up volunteers local area coordinator visited and will try to get volunteers

Support Required

- Water supply – permission / funding
- Postcrete for benches, locations ok?
- Funding for Compost and ongoing fixtures and fittings
- Acceptance to Garnswllt Facebook page

Garnswilt Damage

Examples of Damage



Garnswilt

Grass
naturalisation



Benches

